



MCPU-X26

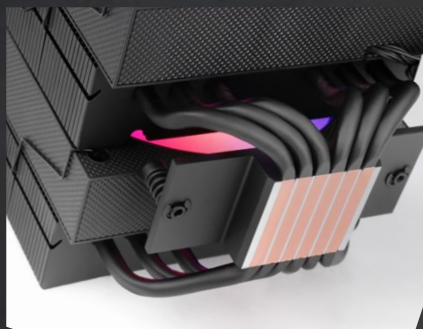
CPU COOLER

SPECIFICATIONS

TDP	350W
Fan	120mm
Lighting	ARGB
Voltage	DC 12V
Current	0.5A
Noise level	9-26dBA
RPM	800-2600 ± 10% RPM
MTBF	60.000 hours
Heatpipe	6
Fin material	Aluminum
Connection	PWM 4 pin + 5V ARGB 3pin + auto ARGB SATA to ARGB adapter + noise reduction fan adapter
Addressable RGB	Asus Aura Sync, MSI Mystic Light Sync, RGB Fusion & ARGB controllers
Socket CPU	INTEL LGA 1851/1700/1200/1156/1155/1151/1150/1366 and AMD AM5/AM4
Dimensions	122 x 122 x 158 mm / 904g
Height	158mm

MCPU-X26 CPU cooler with Dual-Tower structure and dual ARGB Infinity Mirror fans. **Integrates 6 next-generation HCT heatpipes capable of handling up to 350W TDP, ensuring efficient and stable thermal dissipation even under extreme loads.** Optimized design for high performance with silent operation and ARGB lighting.

Advanced cooling system with 120 mm fans and copper core for ultra-silent operation. **Includes a SATA adapter for automatic ARGB Rainbow mode activation and a noise reduction cable for ultra-low noise levels.** Multisocket compatibility with Intel LGA and AMD platforms, ideal for gaming configurations and high-performance workstations.



LOGISTICS

MCPUX26 EAN 8435693113454

UNITS/BOX 8

MCPUX26W EAN 8435693113478

PACKAGING 196x160x180mm