



ELC-LMIV120-SF



ELC-LMIV240-SF



ELC-LMIV360-SF

# LIQMAX IV

## LIQMAX IV



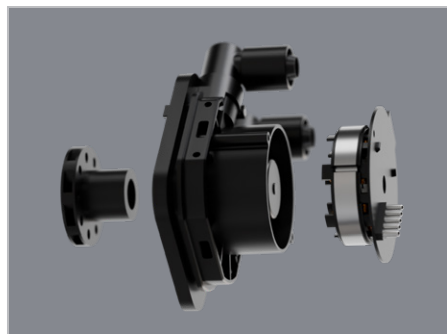
- Superior Cooling Capacity (320W/370W/390W TDP)
- Patented Dual-Chamber Water Block Design
- Equipped with High-Performance Silent Flow Fan
- Supports AMD AM5 and Intel LGA 1851
- Magnetic Rotatable Real-time Status Digital Display

### Features

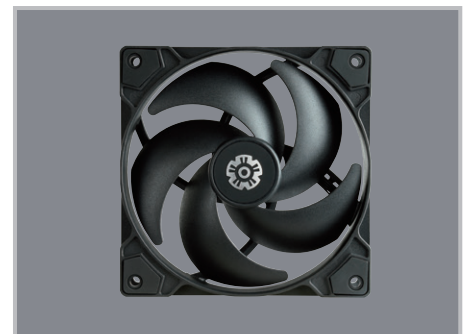
- Patented Dual-Chamber Water Block with ENERMAX Gen.2 Xtreme Pump Design
  - ENERMAX Gen.2 Xtreme Pump Technology is the newly designed water block. With the enlarged cooling base and improved pump lift and flow rate, it can deliver superior cooling capacity.
- More Silent Operation
  - The exclusive Silent Flow Fan with its 3mm thicker blades and optimized angles, strikes a balance between advanced cooling and minimized noise.
  - All PWM-controlled designs, allow AIO to alter their speed and airflow based on system loading, creating a quieter environment.
- Magnetic Rotatable Real-time Status Digital Display
  - Real-time monitoring of CPU and GPU temperatures and fan speeds, with software control and alarm settings.
  - Magnetic, 360-degree rotatable display design to meet all display needs.
- Easy Installation
  - The fan is pre-installed on the radiator, making the installation process easier and significantly reducing assembly time.



Magnetic Rotatable Real-time Status Digital Display



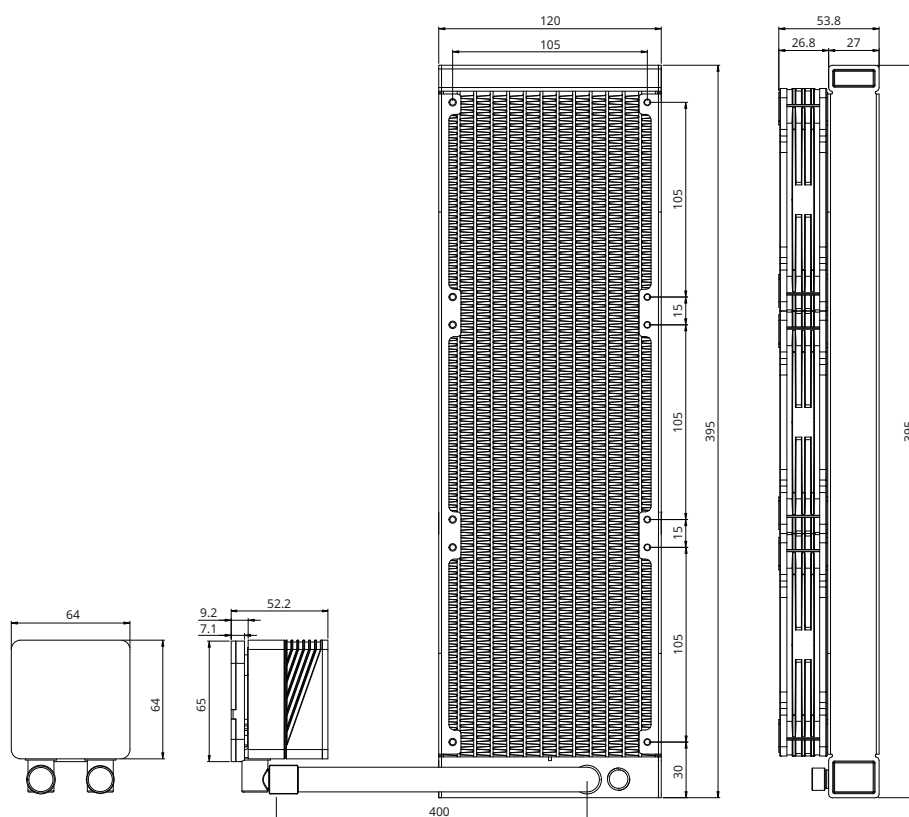
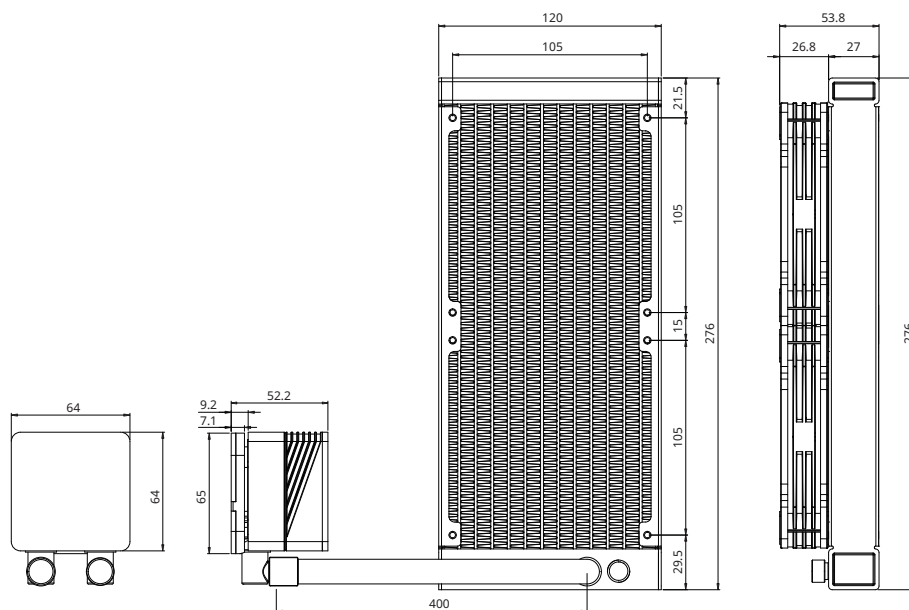
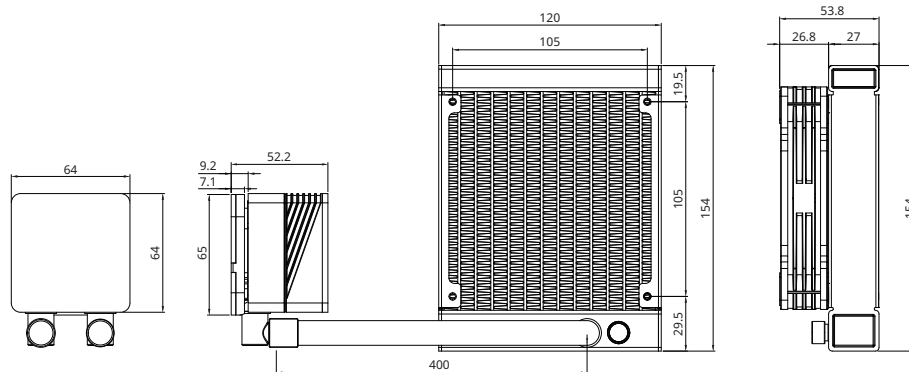
Patented Dual-Chamber Water Block Design



High-Performance PWM Fan

# Dimension

unit : mm



# Specifications

Model		ELC-LMIV120-SF	ELC-LMIV240-SF	ELC-LMIV360-SF
CPU Socket		Intel® LGA 1851/1700/115x/2066 AMD® AM5/AM4		
Radiator Dimension		154 x 120 x 27mm	274 x 120 x 27 mm	394 x 120 x 27mm
Tube Length		400 mm		
Material	Cold Plate	Copper		
	Radiator	Aluminum		
	Tube	Rubber		
Water Block Pump	Speed	1500~3100 RPM ±10%		
	Bearing	Ceramic bearing		
	MTBF	100,000 hrs		
	Rated Voltage	12V		
	Rated Current	0.35A		
Fan	Dimension	120 x 120 x 26.8 mm		
	MTTF	≥ 60,000 hrs		
	Speed	500~1800 RPM ±10%		
	Rated Voltage	12V		
	Rated Current	0.08A		
	Air Flow	58.03 CFM		
	Static Pressure	2.4 mmH2O		
	Noise Level	23.46 dBA		
	Connector	4 Pin PWM		
TDP		320W	370W	390W
Logistic information				
Barcode	EAN	4713157729262	4713157729279	4713157729286
	UPC	819315029268	819315029275	819315029282
Box Dimension		245 x 137 x 218 mm	306 x 147 x 232 mm	448 x 137 x 210 mm
Gross Weight / Unit		1.5 kg	1.97 kg	2.46 kg
Carton Dimension		510 x 455 x 320 mm	488 x 325 x 475 mm	467 x 292 x 450 mm
Q'ty / Carton		13.4 kg	13.05 kg	10.9 kg
Gross Weight / Carton		8 pcs	6 pcs	4 pcs