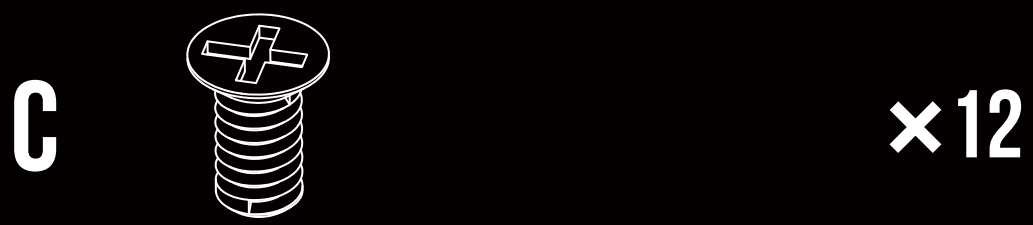
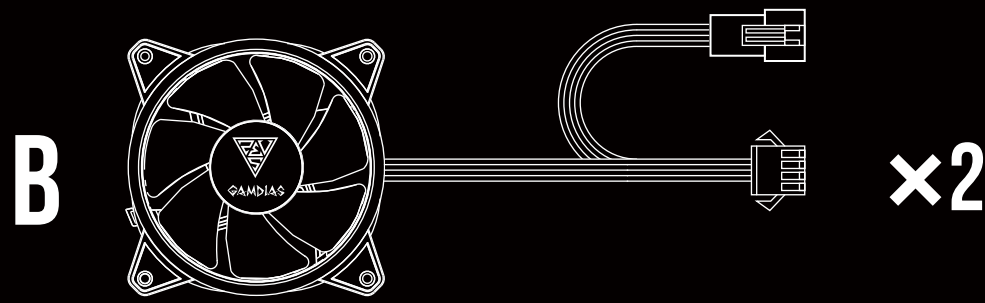
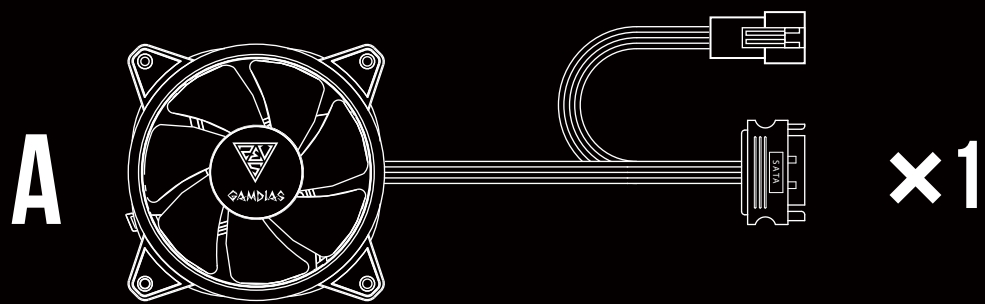


STEP by STEP INSTALLATION GUIDE



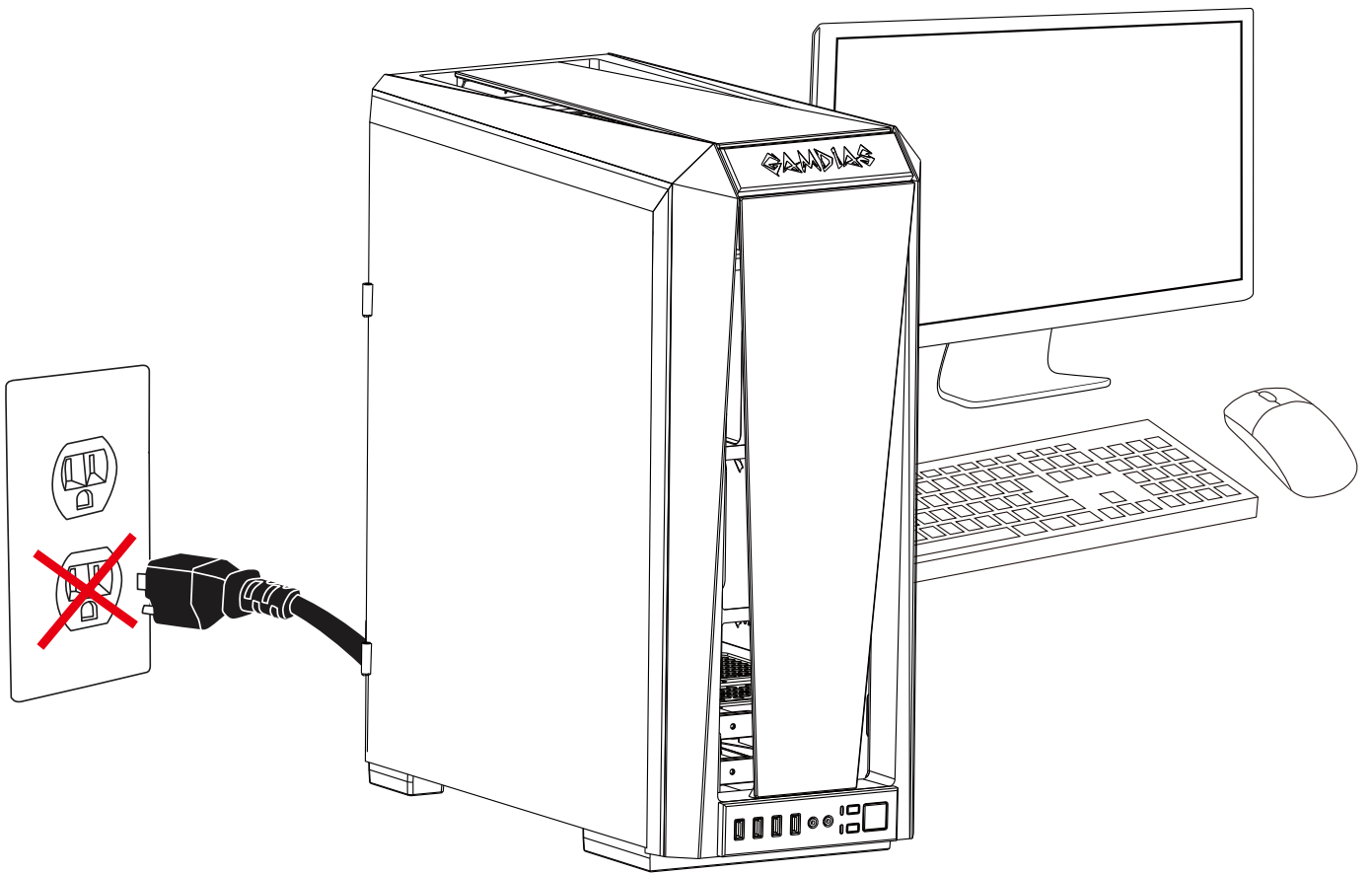
GAMDIAS
AEOLUS M2 
1203M
PC Case & Radiator Fan 120mm

Package Contents

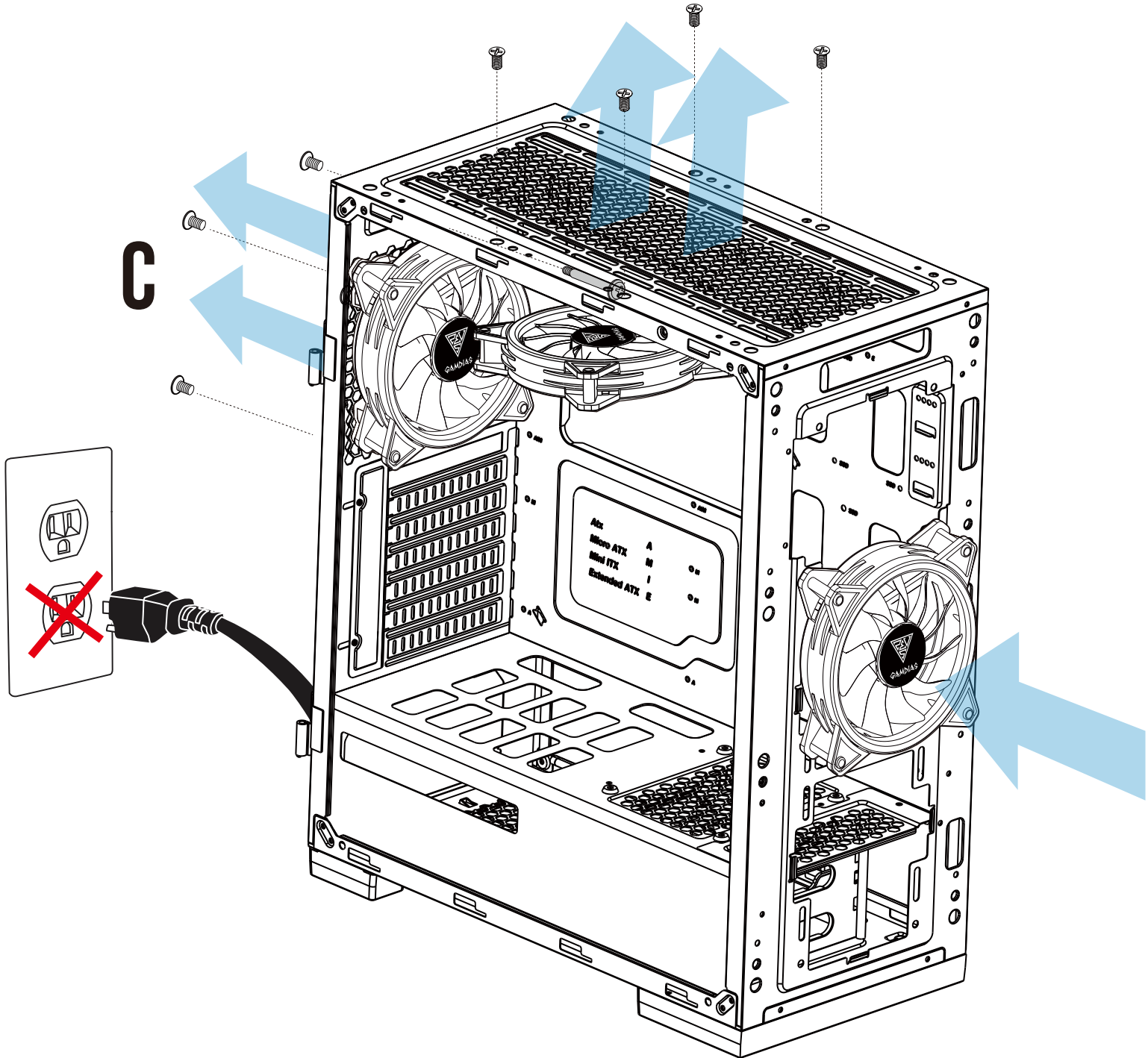


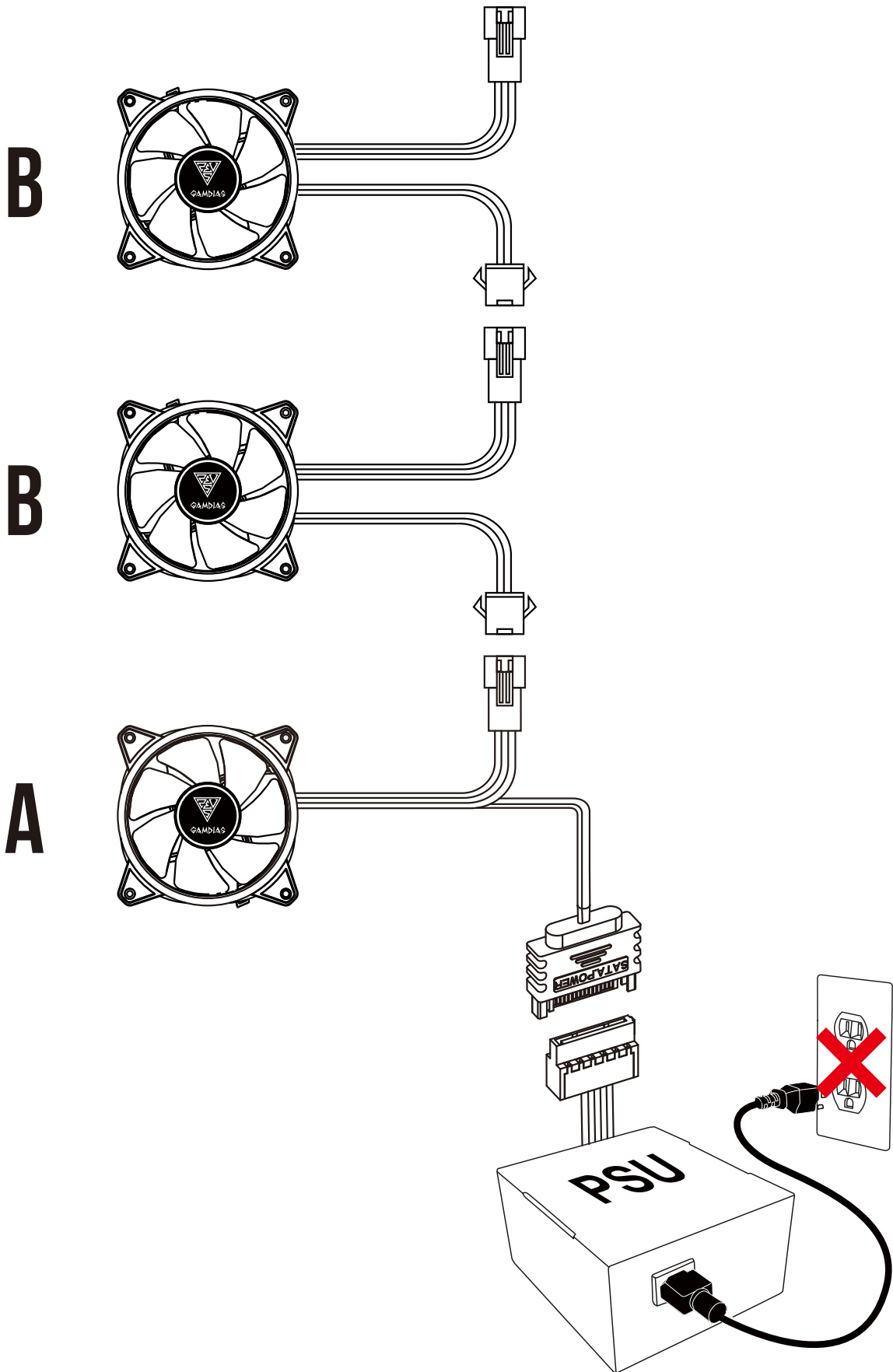
01

Turn off the computer before installing



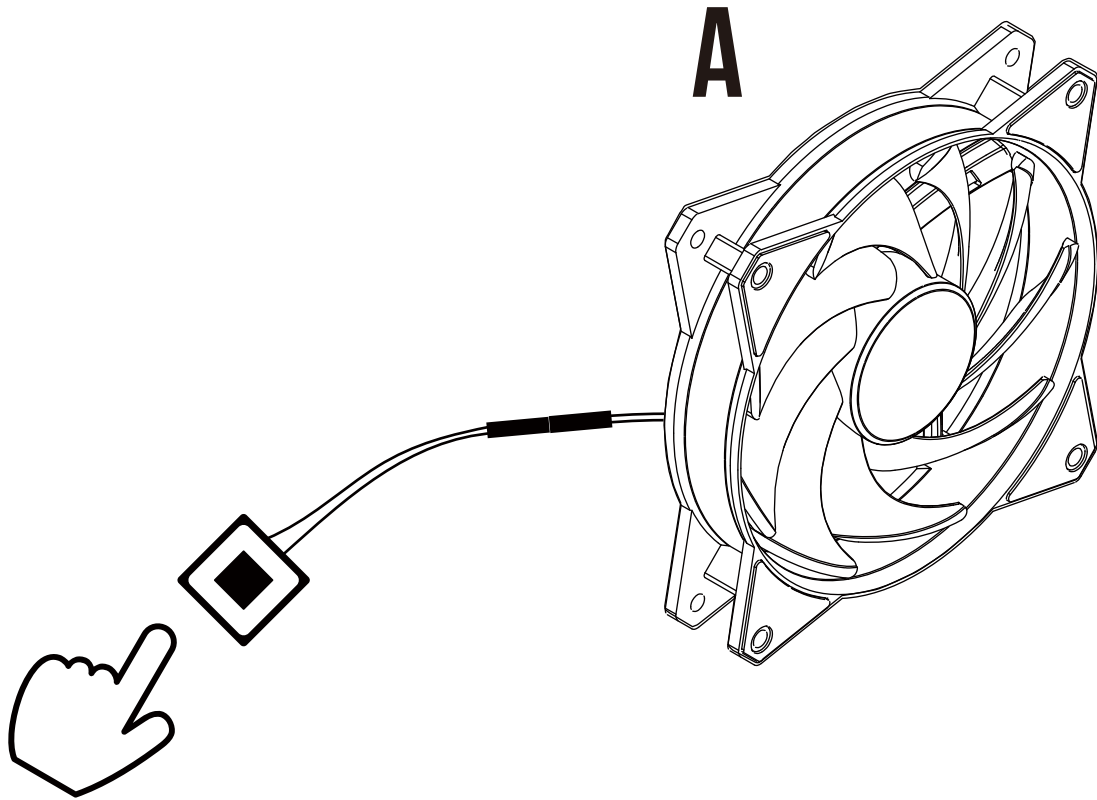
C





04

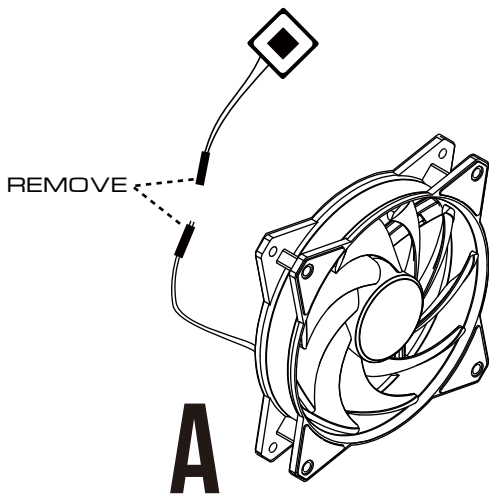
Two methods to control build-in RGB Lighting
Method 1. Use included button



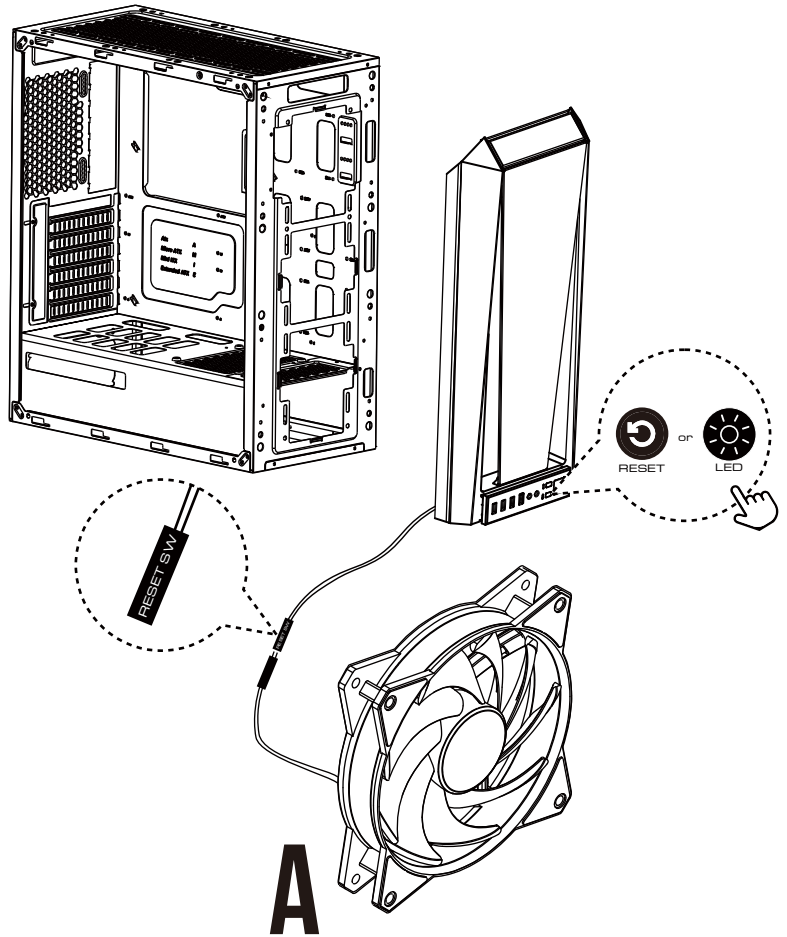
05

Two methods to control build-in RGB Lighting
Method 2. If your case has "RESET SW", you can use case button to change lighting modes

1

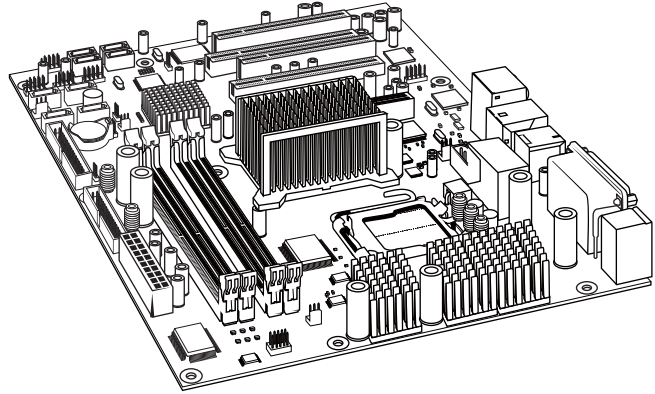
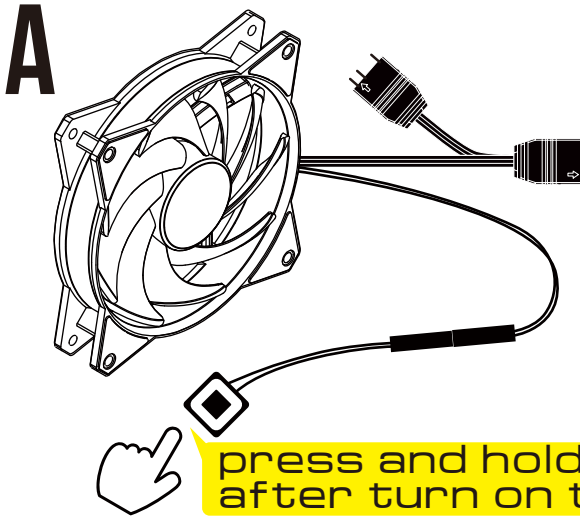


2

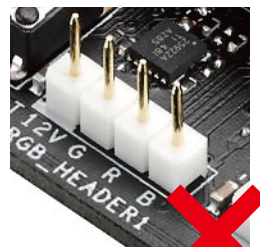
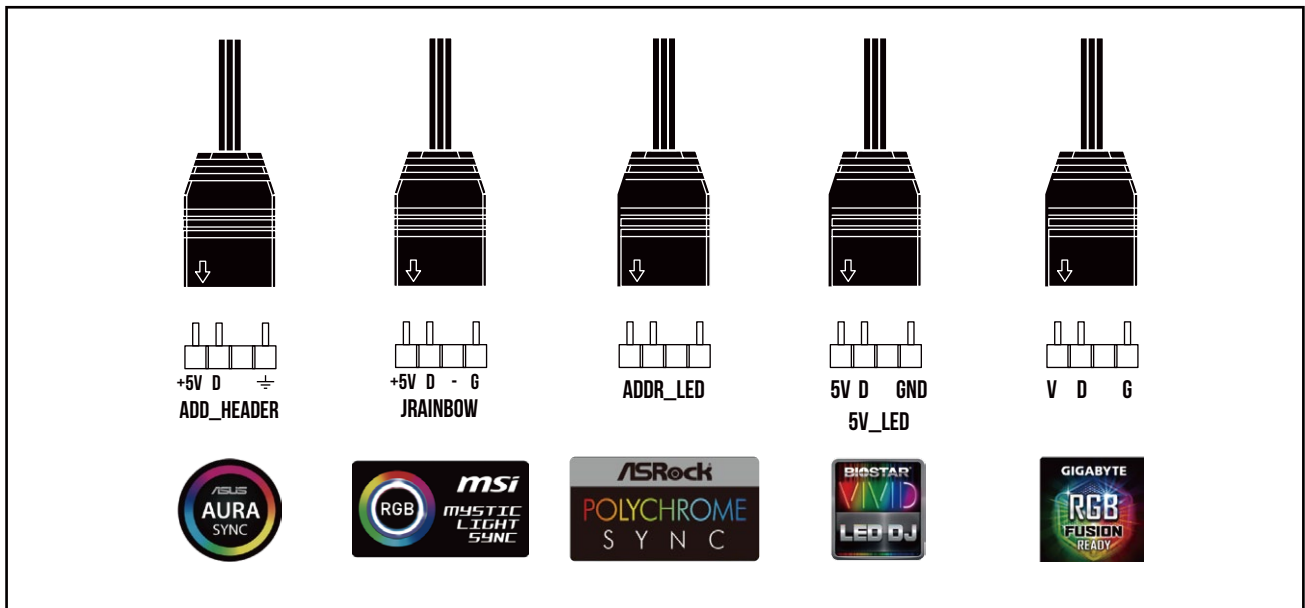


06

If your motherboard has 5V 3-Pin addressable (digital) RGB header, you can customize RGB lighting via motherboard manufacturer sync software



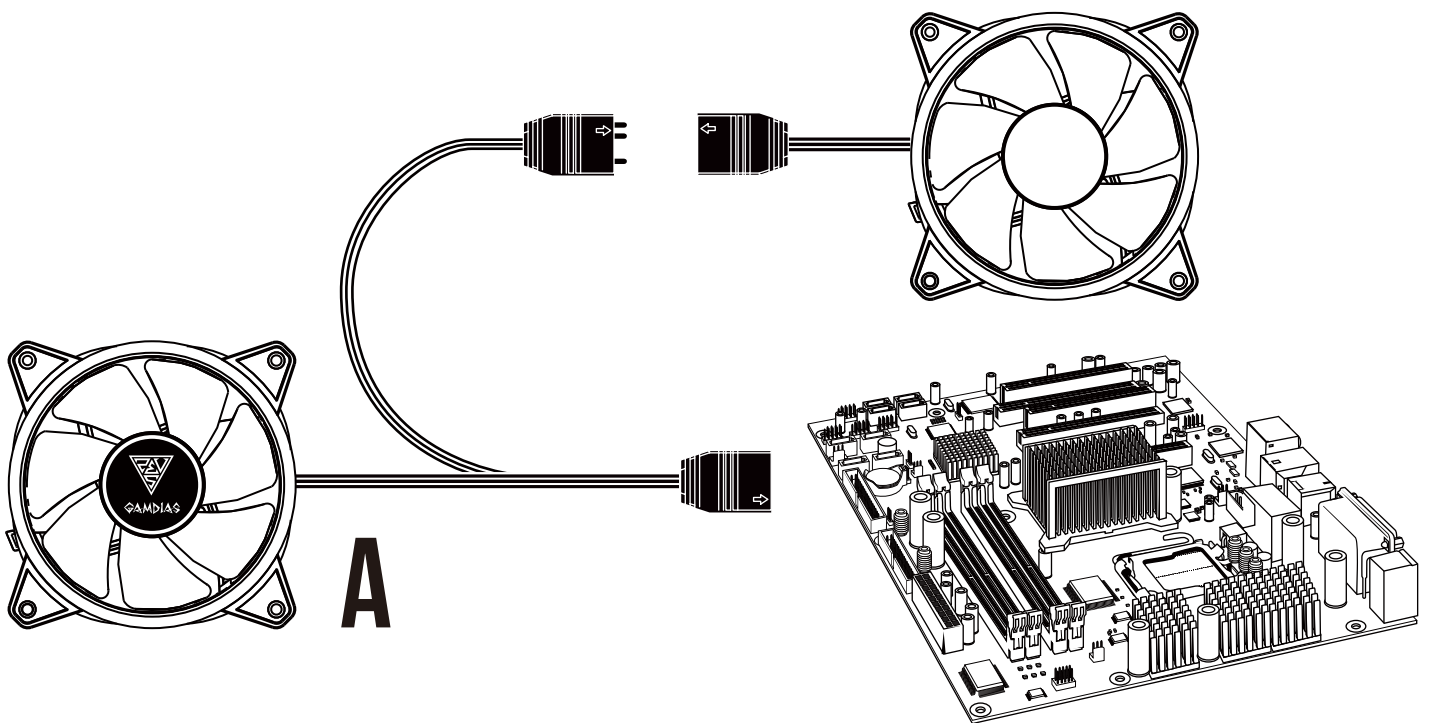
press and hold the button for 3 seconds after turn on the computer



AEOLUS M2-1203 LITE only support 5V addressable (digital) RGB header

07

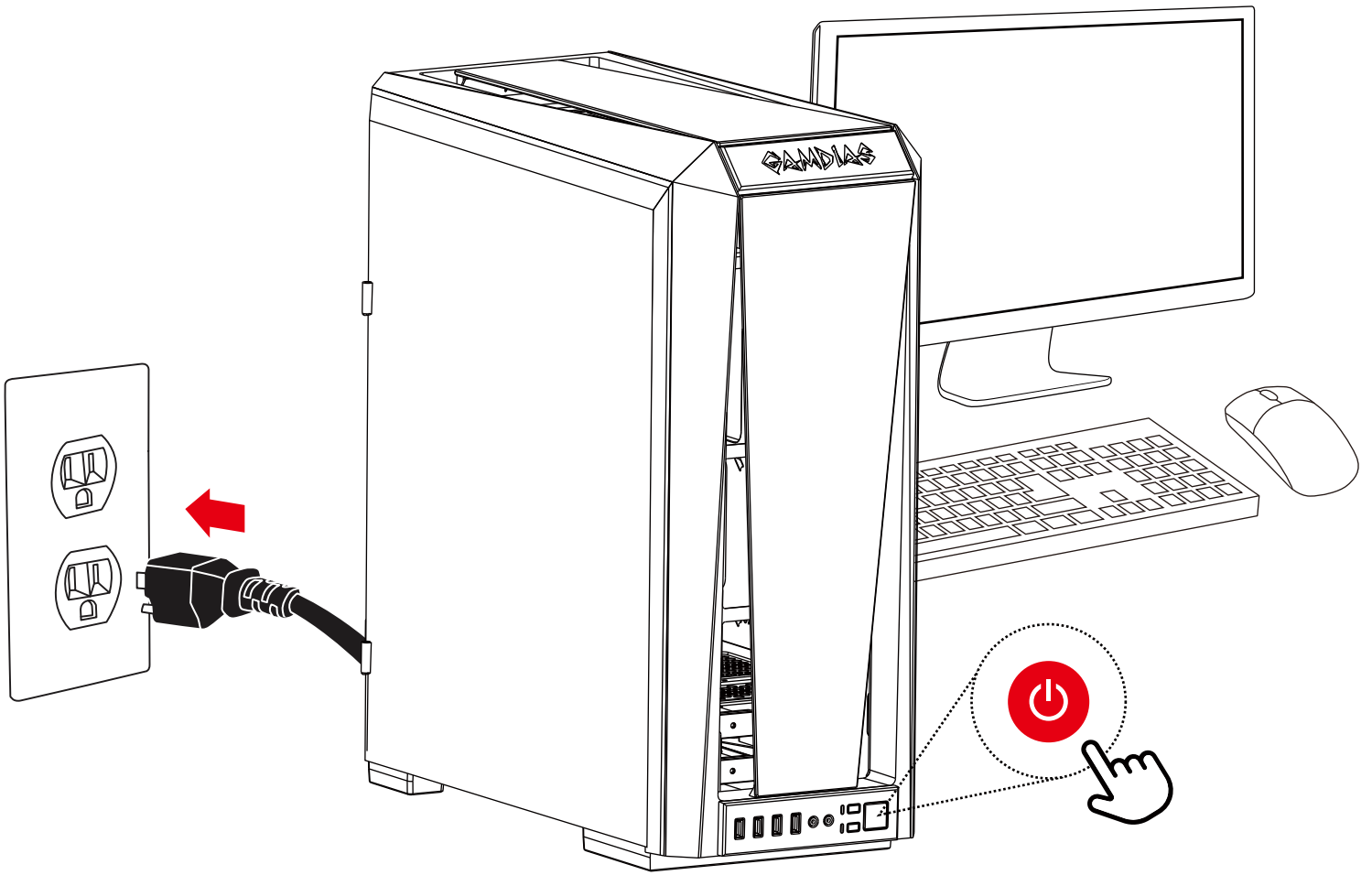
The design of male and female motherboard sync connectors to deal with insufficient 5V socket



Only support 5V addressable (digital) LED

08

Turn on the computer after installing





GAMDIAS

GAMING ART IN MOTION