

# X MIGHTY 2000W

## NEXT GEN MIGHT

Introducing the X Mighty Platinum featuring 80 Plus Platinum efficiency, an active bridge rectifier, ATX 3.1 support, two durable 12V-2x6 cables, an advanced thermal structure and a digital monitor powered by Cooler Master's MasterCTRL software. With these features, the Mighty provides powerful support.

The X Mighty Platinum also includes industrial-grade Infineon IC chips, a zero-RPM fan mode, a smart thermal control mode, fully modular cabling, high-quality Japanese capacitors, and a 10-year warranty. The X Mighty Platinum is the ultimate choice for reliable, powerful performance.

## FEATURES

### Silent Operation

- Smart thermal control mode that adjusts fan speed based on PSU temperature
- Silent fan performance with a default zero-RPM mode for noise-free operation
- Fully modular cabling design to reduce clutter, improve airflow, and minimize noise
- Visual power management for stable control and monitoring, contributing to system silence
- Advanced aluminum thermal structure ensures excellent heat dissipation and durability

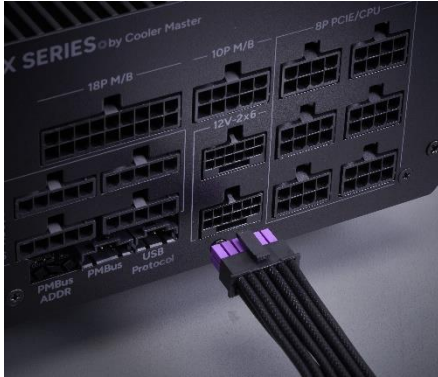
### AI Ready | Designed for High-Performance AI Workloads

- Supports dual 12V-2x6 connectors for dual GPU configurations, ideal for AI and machine learning workloads
- ATX 3.1 and PCIe 5.1 support ensures stable and efficient power delivery for high-end GPUs
- PMBus port support offers enterprise-grade performance monitoring capability

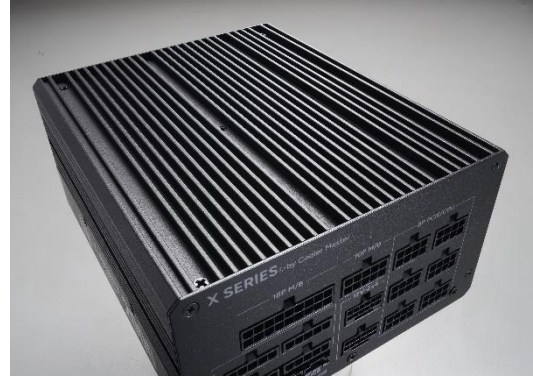
### Premium Components

- 80 Plus Platinum efficiency certification guarantees energy savings and quality performance
- Active bridge rectifier for enhanced power efficiency and stability
- Infineon industrial-grade chipset ensures long-lasting reliability
- High-quality Japanese capacitors improve longevity and reduce electrical noise
- 10-year warranty proves quality and reliability
- Dual-color connectors (with clear purple markings) help users confirm correct installation, preventing poor contact and power issues for enhanced safety and reliability

# FEATURE HIGHLIGHTS



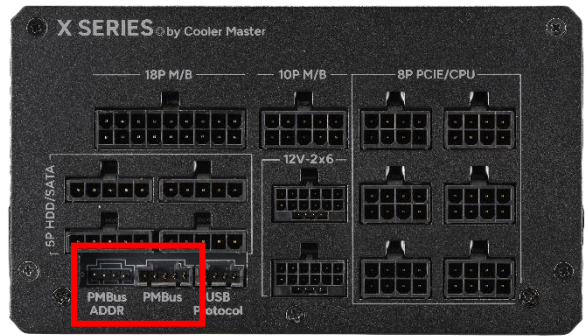
Supports dual 12V-2x6 connectors for dual GPU configurations, ideal for AI and machine learning workloads.  
Features dual-color connectors (black and purple) to ensure correct installation.



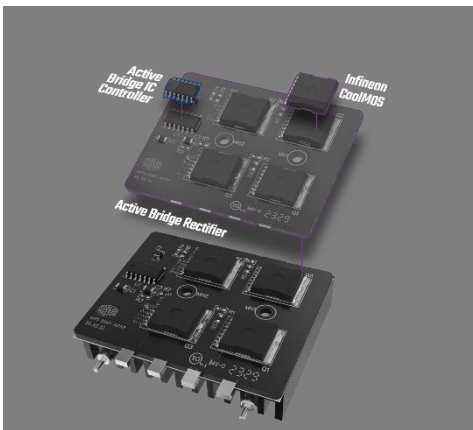
Advanced aluminum thermal structure ensures excellent heat dissipation and durability



High-quality Japanese capacitors improve longevity and reduce electrical noise



PMBus port support offers enterprise-grade performance monitoring capability



Infineon industrial-grade chipset ensures long-lasting reliability



Active bridge rectifier for enhanced power efficiency and stability



# PRODUCT SPECIFICATIONS

<b>Product Name</b>	X Mighty Platinum 2000
<b>Item Code</b>	MPS-K001-AFBP
<b>ATX Version</b>	ATX 12V Ver. 3.1
<b>PFC</b>	Active PFC
<b>Input Voltage</b>	115 - 240V (115 - 240V for 1600W / 200 -240V for 2000W)
<b>Input Current</b>	16A (max)
<b>Input Frequency</b>	50 - 60Hz
<b>Dimensions (L x W x H)</b>	180 x 150 x 86mm
<b>Fan Size</b>	120 mm
<b>Fan Bearing</b>	FDB
<b>Fan Speed</b>	2500 rpm
<b>Efficiency</b>	≥ 94% @ Typical Load
<b>80 PLUS Rating</b>	80 PLUS Platinum of EU Internal
<b>ErP 2014 Lot 3</b>	Yes
<b>Operating Temperature</b>	0 ~ 50°C
<b>Power Good Signal</b>	100 - 150ms
<b>Hold Up Time</b>	≥ 16ms
<b>MTBF</b>	>100,000 hours
<b>Protections</b>	OPP / OVP / OTP / OCP/ SCP / UVP / Surge & Inrush Protection
<b>Regulatory</b>	cUL, TUV, CE, FCC, BSMI, CCC, EAC, RCM, UKCA / BIS, KC (based on region's request.)

# CABLE AND CONNECTOR

Type	Cable	Connector	Length
ATX 24 Pin	1	1	650mm
EPS 4+4 Pin	1	1	650mm
EPS 8 Pin	1	1	650mm
SATA	3	12	500 + 150 + 150 + 150mm
Peripheral 4 Pin	1	4	500 + 120 + 120 + 120mm
PCI-e 6+2 Pin	4	4	550mm
12V-2x6	2	2	650mm
USB 10P	1	1	800mm
PMBus 5 Pin	1	1	650mm

# RATED SPECIFICATION

<b>AC INPUT</b>	115-240V~, 16A max, 50 - 60Hz					
<b>DC OUTPUT</b>	+3.3V	+5V	+12V		-12V	+5Vstb
	20A	20A	166.6A	133.3A	0.3A	3A
<b>TOTAL POWER</b>	120W		1999.2W	1599.6W	3.6W	15W
			FOR 2000W	FOR 1600W		
	2000W for 200-240V, 1600W for 115-240V					



## PACKING INFORMATION

Cable Type	EAN	UPC
MPS-K001-AFBP-NBUK	471952161043	884102133329
MPS-K001-AFBP-NBEU	471952161593	884102133879
MPS-K001-AFBP-NBST	471952161050	884102133336
MPS-K001-AFBP-NBAU	471952161067	884102133343
MPS-K001-AFBP-NBBR	471952161074	884102133350
MPS-K001-AFBP-NBKR	471952161081	884102133367
MPS-K001-AFBP-NBIN	471952161098	884102133374
MPS-K001-AFBP-NBPH	471952161104	884102133381
MPS-K001-AFBP-NBAR	471952161985	884102133268
MPS-K001-AFBP-NBWO	471952161111	884102133398
MPS-K001-AFBP-NBBS	471952161128	884102133404
MPS-K001-AFBP-NBNL	471952161135	884102133411
MPS-K001-AFBP-NBHK	471952161142	884102133428
MPS-K001-AFBP-NBBU	471952161159	884102133435
MPS-K001-AFBP-NBCP	N/A	N/A
MPS-K001-AFBP-NBCN	6928968323327	N/A
MPS-K001-AFBP-NBBC	6928968323341	N/A

## SHIPPING DETAILS

<b>Net Weight</b>	3.9 kg	
<b>Gross Weight</b>	5.1 kg	
<b>Package Dimensions (W x L x H)</b>	420 x 241 x 124mm	
<b>Carton Dimensions (W x L x H)</b>	432 x 263 x 274mm	
<b>Unit / Carton</b>	2 pcs	
<b>Unit / Pallet (Standard)</b>	48 pcs	
<b>Unit / Pallet (HQ)</b>	64 pcs	
<b>Container 20 feet</b>	With Pallet	1152 pcs
	Carton / Pallet	24 pcs
<b>Container 40 feet</b>	With Pallet	2496 pcs
	Carton / Pallet	24 pcs
<b>Container 40 HQ</b>	With Pallet	3328 pcs
	Carton / Pallet	32 pcs