

Sharkoon



SKILLER



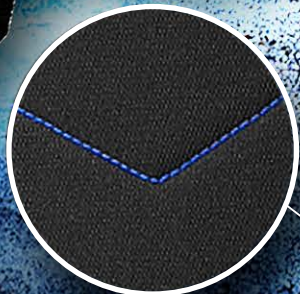
SGS2

GAMING SEAT

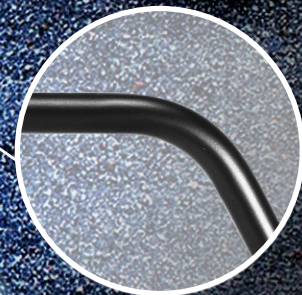
FEATURES

- First-class gaming seat with fabric cover
- Robust steel frame construction
- Flexible 3D adjustable armrest
- Adjustable backrest from 90° to 160°
- Tilt control system (3° to 18°)
- Class-4 gas lift piston
- 60 mm wheels
- Headrest & lumbar cushion

TOP FEATURES



Breathable fabric cover



Robust steel frame construction

Flexible 3D adjustable armrest



Class-4 gas lift piston

Comfortable fabric cover for headrest and lumbar cushions

60 mm wheels

Robust steel five-star base



COLOR VERSIONS



Sporty design in a classic black base color with optional highlights in red, blue, green or grey.

FLEXIBLE 3D ADJUSTABLE ARMREST



COMFORT FUNCTIONS

Maximum Relaxation

With its comfortable tilt control system, the SKILLER SGS2 ensures that even hectic gaming situations can be relaxing thanks to its rocking chair vibe with tilt angles from 3° to 18°. During quick breaks, the backrest can be locked at angles between 90° and 160°.



Large 60 mm Wheels

The five large 60 mm wheels support the stable stand and ensure mobility on level surfaces.

HIGH QUALITY MANUFACTURING



The frame of the SKILLER SGS2 Gaming Seat is constructed from high quality steel to ensure optimum stability. The covers, made from soft fabric, are not only comfortable but also breathable and easy to clean with standard cleaning agents. The fabric pillow covers can be washed at 30 degrees Celsius.

DIMENSIONS AND TILT ANGLES



SPECIFICATIONS

GENERAL:

■ Foam Type	Seat: Moulded Foam Backrest: Polyurethane Foam
■ Foam Density	Seat: 50 kg/m ³ Backrest: 24 kg/m ³
■ Frame Construction	Steel (Diameter: 19 mm)
■ Seat Cover Material	Fabric
■ Color Versions	Black/Grey, Black/Blue, Black/Red, Black/Green
■ Adjustable Armrests	3D
■ Armrest Pad Size (L x W)	25 x 9 cm
■ Mechanism	Conventional Tilt
■ Tilt Lock	✓
■ Adjustable Tilt Angle	3° - 18°
■ Gas Lift Piston	Class-4
■ Seat Back Style	High-Back
■ Adjustable Back Angle	90° - 160°
■ Headrest & Lumbar Cushion	✓
■ Headrest & Lumbar Cushion Cover Material	Fabric
■ Base Type	Steel Five-Star Base
■ Wheel Size	60 mm
■ Assembly Required	✓

SAFETY CERTIFICATIONS:

■ Chair (General)	DIN EN 1335-1/2/3
■ Gas Lift Piston	DIN 4550

WEIGHT & DIMENSIONS:

■ Seating Size (W x D)	39.5 x 50 cm
■ Maximum Seating Height	58.5 cm
■ Minimum Seating Height	49 cm
■ Maximum Arm Height	35.5 cm
■ Minimum Arm Height	28.5 cm
■ Backrest Height	83 cm
■ Backrest Shoulder Width	57 cm
■ Package Size (L x W x H)	86 x 70 x 33 cm
■ Max. Height of Recommended User	185 cm
■ Weight	20.8 kg
■ Max. Weights Capacity	110 kg

SHIPMENT BOX

- Packing unit: 1
- Dimensions: 86 x 70 x 33 cm
- Weight: 23 kg
- Customs tariff no.: 94013000
- Country of origin: China

PACKAGE CONTENTS:

- SKILLER SGS2
- Headrest & lumbar cushion
- Manual
- Accessory Set



SKILLER SGS2 BLACK/GREY



SKILLER SGS2 BLACK/BLUE



SKILLER SGS2 BLACK/RED



SKILLER SGS2 BLACK/GREEN

